

\$129,900 - 116 6710 158 Avenue, Edmonton

MLS® #E4431536

\$129,900

1 Bedroom, 1.00 Bathroom, 578 sqft

Condo / Townhouse on 0.00 Acres

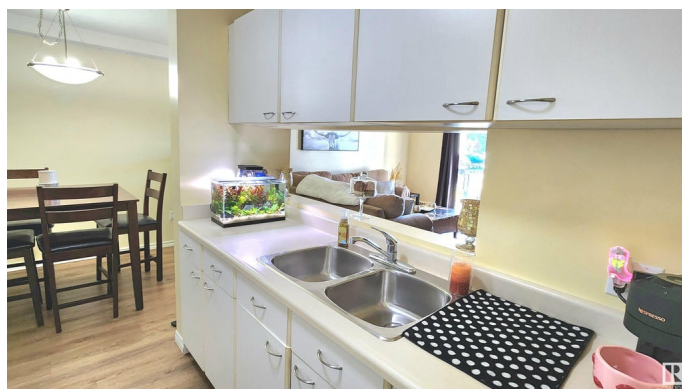
Ozerna, Edmonton, AB

Located in the Popular Neighbourhood of "Ozerna" - Welcome to Sante Fe Carlisle! This Main floor with Large Patio unit features a Sunny WEST Exposure and is described as "Cute" as a button. This is the perfect unit for the First Home Buyer or Empty Nestor and features a Functional Floor plan with a Large Primary Bedroom, Good Sized Dining Area & Oversized Living Room! Featuring a Large Pantry, Large Storage Room, In-Suite Laundry & Lots of Closet Space in the Primary Bedroom. The unit has a Warm & Energetic Paint Colour and has Newer Laminate Flooring Throughout. The Kitchen has a Cut-Let opening to the Living Room which give the the unit a Nice Open Floor Plan. Condo Fees include all utilities, except for Power & Is well Managed. Very Friendly Building with Ease of Access to Anthony Henday, City Transit & TONS of North Edmonton Shopping & Amenities. Great Unit in a building built in 1991! Don't Miss Out! *\$2,500 Credit included in the sale Price for Paint & Improvements*

Built in 1991

Essential Information

MLS® #	E4431536
Price	\$129,900
Bedrooms	1



Bathrooms	1.00
Full Baths	1
Square Footage	578
Acres	0.00
Year Built	1991
Type	Condo / Townhouse
Sub-Type	Lowrise Apartment
Style	Single Level Apartment
Status	Active

Community Information

Address	116 6710 158 Avenue
Area	Edmonton
Subdivision	Ozerna
City	Edmonton
County	ALBERTA
Province	AB
Postal Code	T5Z 3A7

Amenities

Amenities	Detectors Smoke, No Smoking Home, Parking-Visitor, Patio, Storage-In-Suite, See Remarks
Parking Spaces	1
Parking	Stall

Interior

Appliances	Dishwasher-Built-In, Hood Fan, Refrigerator, Stacked Washer/Dryer, Stove-Electric, Window Coverings
Heating	Baseboard, Natural Gas
# of Stories	4
Stories	1
Has Basement	Yes
Basement	None, No Basement

Exterior

Exterior	Wood, Stucco
Exterior Features	Public Transportation, Schools, Shopping Nearby
Roof	Asphalt Shingles
Construction	Wood, Stucco

Foundation Concrete Perimeter

Additional Information

Date Listed April 16th, 2025
Days on Market 3
Zoning Zone 28
Condo Fee \$392

DATA IS DEEMED RELIABLE BUT IS NOT GUARANTEED ACCURATE BY THE REALTORS® ASSOCIATION OF EDMONTON. COPYRIGHT 2025 BY THE REALTORS® ASSOCIATION OF EDMONTON. ALL RIGHTS RESERVED.Trademarks are owned or controlled by the Canadian Real Estate Association (CREA) and identify real estate professionals who are members of CREA (REALTOR®, REALTORS®) and/or the quality of services they provide (MLS®, Multiple Listing Service®)
Listing information last updated on April 19th, 2025 at 11:02am MDT