

Courtesy Of Mason Salame and Neithan Salame Of RE/MAX River City

# \$869,900 - 1133 Gyrfalcon Crescent, Edmonton

MLS® #E4428602

**\$869,900**

4 Bedroom, 3.00 Bathroom, 2,540 sqft  
Single Family on 0.00 Acres

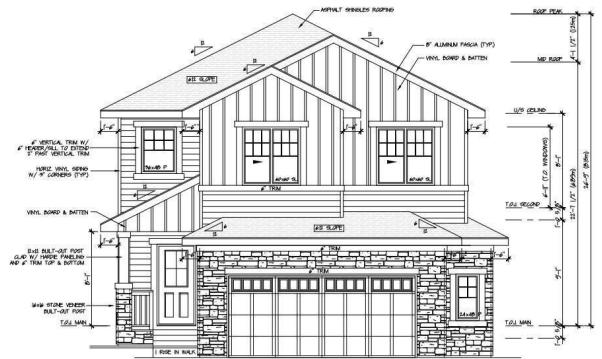
Hawks Ridge, Edmonton, AB

FINESSE/VANGUARD BUILT HOMES quality and experience is evident in this WALKOUT BASEMENT Brand new build 2540 Sq Ft 2 storey home with a roaring open concept ceiling, 9 foot ceilings on the main and on the second floor, 8 foot interior doors and a private and amazing location on a pie shaped lot. This home has a open concept with 4 bedrooms upstairs with a beautiful ensuite bath with tub and enclosed modern glass shower and second floor laundry and also a large bonus room overlooking a modern concept main floor with high ceilings and modern finishing's. The main floor also has a office/Den area and a beautiful kitchen area with a extra butlers pantry/spice kitchen and large mud room off the back garage door and a full bath on the main. This home is amazing and provides perfect spaces for a growing family. Still time to choose interior color's and some finishing's to make this home feel custom to your needs

Built in 2025

## Essential Information

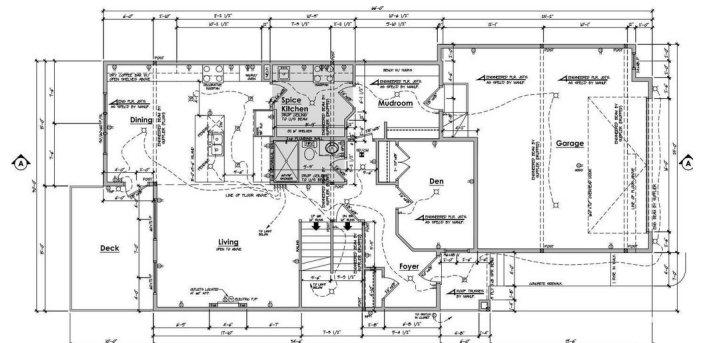
|            |           |
|------------|-----------|
| MLS® #     | E4428602  |
| Price      | \$869,900 |
| Bedrooms   | 4         |
| Bathrooms  | 3.00      |
| Full Baths | 3         |



Front Elevation



Rear Elevation



Main Floor Plan  
1190 sq ft  
9'1" Ceiling

|                |                        |
|----------------|------------------------|
| Square Footage | 2,540                  |
| Acres          | 0.00                   |
| Year Built     | 2025                   |
| Type           | Single Family          |
| Sub-Type       | Detached Single Family |
| Style          | 2 Storey               |
| Status         | Active                 |

### **Community Information**

|             |                         |
|-------------|-------------------------|
| Address     | 1133 Gyrfalcon Crescent |
| Area        | Edmonton                |
| Subdivision | Hawks Ridge             |
| City        | Edmonton                |
| County      | ALBERTA                 |
| Province    | AB                      |
| Postal Code | T5S 0S5                 |

### **Amenities**

|                |                                    |
|----------------|------------------------------------|
| Amenities      | Walkout Basement, See Remarks      |
| Parking Spaces | 5                                  |
| Parking        | Double Garage Attached, Over Sized |

### **Interior**

|                   |                           |
|-------------------|---------------------------|
| Interior Features | ensuite bathroom          |
| Appliances        | See Remarks               |
| Heating           | Forced Air-1, Natural Gas |
| Fireplace         | Yes                       |
| Fireplaces        | Insert                    |
| Stories           | 2                         |
| Has Basement      | Yes                       |
| Basement          | See Remarks               |

### **Exterior**

|                   |   |
|-------------------|---|
| Exterior          | Wood, Vinyl   |
| Exterior Features | Cul-De-Sac, No Back Lane, Park/Reserve, See Remarks |
| Roof              | Asphalt Shingles                                    |
| Construction      | Wood, Vinyl   |
| Foundation        | Concrete Perimeter                                  |

### **Additional Information**

Date Listed April 2nd, 2025

Days on Market 8

Zoning Zone 59

DATA IS DEEMED RELIABLE BUT IS NOT GUARANTEED ACCURATE BY THE REALTORS® ASSOCIATION OF EDMONTON. COPYRIGHT 2025 BY THE REALTORS® ASSOCIATION OF EDMONTON. ALL RIGHTS RESERVED. Trademarks are owned or controlled by the Canadian Real Estate Association (CREA) and identify real estate professionals who are members of CREA (REALTOR®, REALTORS®) and/or the quality of services they provide (MLS®, Multiple Listing Service®)

Listing information last updated on April 10th, 2025 at 9:31pm MDT