

\$519,900 - 2211 Garnett Court, Edmonton

MLS® #E4428371

\$519,900

3 Bedroom, 3.50 Bathroom, 1,501 sqft
Single Family on 0.00 Acres

Glastonbury, Edmonton, AB

Gorgeous 2 storey on quiet cul de sac with pretty fence back yard, Finished basement with rec room, bedroom with office and closet and bathroom (Shower needs finishing). Huge deck and pretty back yard with morning sun!

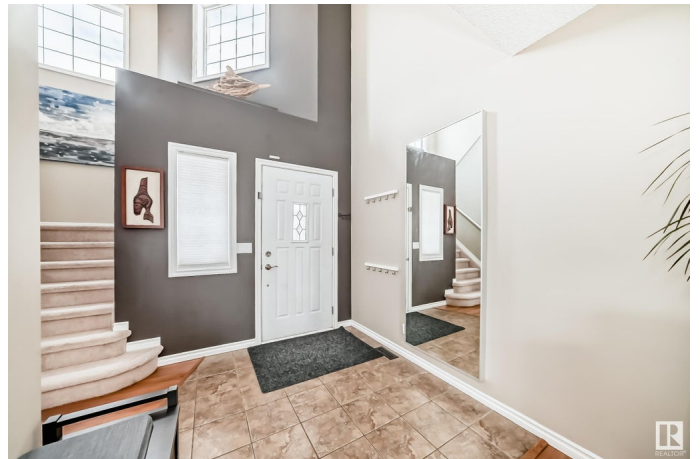
Built in 2002

Essential Information

MLS® #	E4428371
Price	\$519,900
Bedrooms	3
Bathrooms	3.50
Full Baths	3
Half Baths	1
Square Footage	1,501
Acres	0.00
Year Built	2002
Type	Single Family
Sub-Type	Detached Single Family
Style	2 Storey
Status	Active

Community Information

Address	2211 Garnett Court
Area	Edmonton
Subdivision	Glastonbury
City	Edmonton



County ALBERTA
Province AB
Postal Code T5T 6S6

Amenities

Amenities Closet Organizers, Detectors Smoke, Hot Water Natural Gas, No Smoking Home, Vinyl Windows
Parking Double Garage Attached

Interior

Interior Features ensuite bathroom
Appliances Dishwasher-Built-In, Dryer, Garage Control, Garage Opener, Refrigerator, Stove-Electric, Washer, Window Coverings
Heating Forced Air-1, Natural Gas
Fireplace Yes
Fireplaces Glass Door
Stories 3
Has Basement Yes
Basement Full, Finished

Exterior

Exterior Wood, Vinyl
Exterior Features Cul-De-Sac, Fenced, Landscaped, Level Land, Playground Nearby, Public Transportation, Schools, Shopping Nearby
Roof Asphalt Shingles
Construction Wood, Vinyl
Foundation Concrete Perimeter

Additional Information

Date Listed March 31st, 2025
Days on Market 4
Zoning Zone 58

DATA IS DEEMED RELIABLE BUT IS NOT GUARANTEED ACCURATE BY THE REALTORS® ASSOCIATION OF EDMONTON. COPYRIGHT 2025 BY THE REALTORS® ASSOCIATION OF EDMONTON. ALL RIGHTS RESERVED. Trademarks are owned or controlled by the Canadian Real Estate Association (CREA) and identify real estate professionals who are members of CREA (REALTOR®, REALTORS®) and/or the quality of services they provide (MLS®, Multiple Listing Service®)

Listing information last updated on April 4th, 2025 at 6:32am MDT