

Courtesy Of Jeff D Jackson Of Bode

\$589,900 - 427 28 Street, Edmonton

MLS® #E4423302

\$589,900

3 Bedroom, 2.50 Bathroom, 2,050 sqft
Single Family on 0.00 Acres

Alces, Edmonton, AB

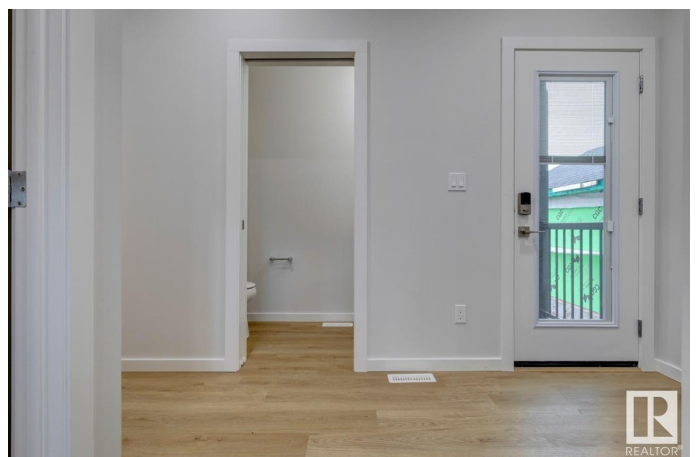
The Kiera by Bedrock Homes is a stunning 3-bedroom, 2.5-bathroom two-story home that blends modern design with smart home technology. The open-concept layout is highlighted by a two-story great room, creating a striking open-to-below space, while the bonus room above offers a beautiful view of the main floor. The alternate kitchen layout features an expanded walk-in pantry, a large island for extra counter space, & a sink perfectly positioned beneath a large backyard-facing window. Stylish spindle railings enhance the airy feel, connecting the upper & lower levels seamlessly. The home is complete with a stainless-steel appliance package. Cozy up by the 50" linear LED electric fireplace, & enjoy the luxury of soft-close cabinets & 41" upper kitchen cabinets. A flex room on the main floor offers the perfect space for a home office or playroom, while the primary suit boasts a large walk-in closet & a spa-inspired ensuite. The Kiera is the perfect blend of elegance and functionality.

Built in 2024

Essential Information

MLS® # E4423302

Price \$589,900



Bedrooms	3
Bathrooms	2.50
Full Baths	2
Half Baths	1
Square Footage	2,050
Acres	0.00
Year Built	2024
Type	Single Family
Sub-Type	Detached Single Family
Style	2 Storey
Status	Active

Community Information

Address	427 28 Street
Area	Edmonton
Subdivision	Alces
City	Edmonton
County	ALBERTA
Province	AB
Postal Code	T6X 1A7

Amenities

Amenities	No Animal Home, No Smoking Home
Parking Spaces	4
Parking	Double Garage Attached

Interior

Interior Features	ensuite bathroom
Appliances	Dishwasher-Built-In, Hood Fan, Refrigerator, Stove-Electric
Heating	Forced Air-1, Natural Gas
Fireplace	Yes
Fireplaces	Insert
Stories	2
Has Basement	Yes
Basement	Full, Unfinished

Exterior

Exterior	Wood, Vinyl
Exterior Features	Park/Reserve, Playground Nearby, Schools, Shopping Nearby

Roof	Asphalt Shingles
Construction	Wood, Vinyl
Foundation	Concrete Perimeter

Additional Information

Date Listed	February 28th, 2025
Days on Market	14
Zoning	Zone 53

DATA IS DEEMED RELIABLE BUT IS NOT GUARANTEED ACCURATE BY THE REALTORS® ASSOCIATION OF EDMONTON. COPYRIGHT 2025 BY THE REALTORS® ASSOCIATION OF EDMONTON. ALL RIGHTS RESERVED. Trademarks are owned or controlled by the Canadian Real Estate Association (CREA) and identify real estate professionals who are members of CREA (REALTOR®, REALTORS®) and/or the quality of services they provide (MLS®, Multiple Listing Service®)

Listing information last updated on March 14th, 2025 at 9:02am MDT