

Courtesy Of Amritpal S Hunjan Of RE/MAX River City

## \$225,000 - 63 16231 19 Avenue, Edmonton

MLS® #E4422600

**\$225,000**

1 Bedroom, 1.00 Bathroom, 616 sqft  
Condo / Townhouse on 0.00 Acres

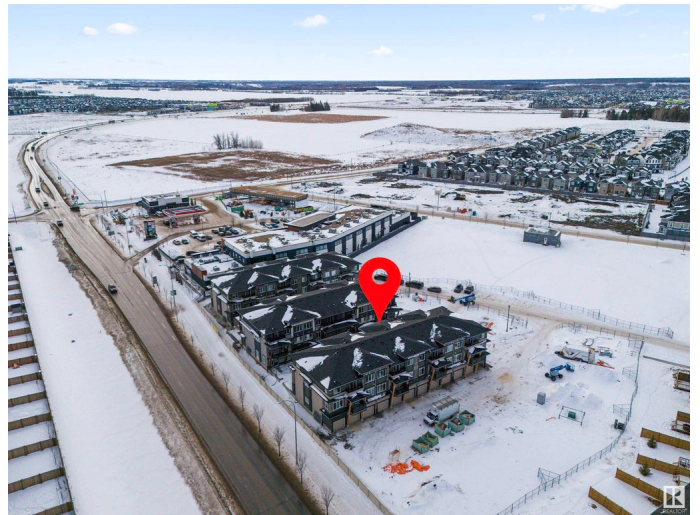
Glenridding Ravine, Edmonton, AB

Welcome to Essential Glenridding, where luxury meets convenience. This brand-new 1-bedroom + DEN, 1-bath, condo boasts stylish finishes throughout. The main floor features an attached single garage, an open-concept layout with a full bath, laundry room, bedroom, and den with a closet. Enjoy your private patio, perfect for outdoor relaxation or entertaining. The modern kitchen includes quartz countertops and upgraded cabinets, making it a fantastic space to cook or host! This unit is not one to miss! It also comes with a SINGLE CAR GARAGE!

Built in 2023

### Essential Information

MLS® #	E4422600
Price	\$225,000
Bedrooms	1
Bathrooms	1.00
Full Baths	1
Square Footage	616
Acres	0.00
Year Built	2023
Type	Condo / Townhouse
Sub-Type	Townhouse
Style	Single Level Apartment
Status	Active



## Community Information

Address 63 16231 19 Avenue  
Area Edmonton  
Subdivision Glenridding Ravine  
City Edmonton  
County ALBERTA  
Province AB  
Postal Code T6W 5C6

## Amenities

Amenities Ceiling 9 ft., Detectors Smoke, Vinyl Windows, See Remarks  
Parking Single Garage Attached

## Interior

Appliances Dishwasher-Built-In, Dryer, Microwave Hood Fan, Refrigerator,  
Stove-Electric, Washer, Window Coverings  
Heating Forced Air-1, Natural Gas  
Stories 1  
Has Basement Yes  
Basement None, No Basement

## Exterior

Exterior Wood, Stone, Vinyl  
Exterior Features Airport Nearby, Golf Nearby, Landscaped, Park/Reserve, Playground  
Nearby, Schools, Ski Hill Nearby  
Roof Asphalt Shingles  
Construction Wood, Stone, Vinyl  
Foundation Concrete Perimeter

## School Information

Elementary Dr. Margaret-Ann Armour  
Middle Dr. Margaret-Ann Armour  
High Lillian Osborne School

## Additional Information

Date Listed February 22nd, 2025  
Days on Market 44  
Zoning Zone 56  
Condo Fee \$137

DATA IS DEEMED RELIABLE BUT IS NOT GUARANTEED ACCURATE BY THE REALTORS® ASSOCIATION OF EDMONTON. COPYRIGHT 2025 BY THE REALTORS® ASSOCIATION OF EDMONTON. ALL RIGHTS RESERVED. Trademarks are owned or controlled by the Canadian Real Estate Association (CREA) and identify real estate professionals who are members of CREA (REALTOR®, REALTORS®) and/or the quality of services they provide (MLS®, Multiple Listing Service®)

Listing information last updated on April 6th, 2025 at 10:02pm MDT