

Courtesy Of John Anderson Of MaxWell Polaris

\$189,900 - 109 10511 42 Avenue, Edmonton

MLS® #E4420907

\$189,900

2 Bedroom, 2.00 Bathroom, 1,049 sqft
Condo / Townhouse on 0.00 Acres

Rideau Park (Edmonton), Edmonton, AB

Bright, west facing 2 bedroom unit with 2
TITLED UNDERGROUND STALLS!!
Spacious layout with 2 good sized bedrooms
and 2 full baths! Open kitchen, gas fireplace
and huge laundry/storage room make this a
very inviting and comfortable space. Great
location with easy access to major routes,
shopping, schools & public transportation.
There is a gym and social/party room. Flexible
possession available!

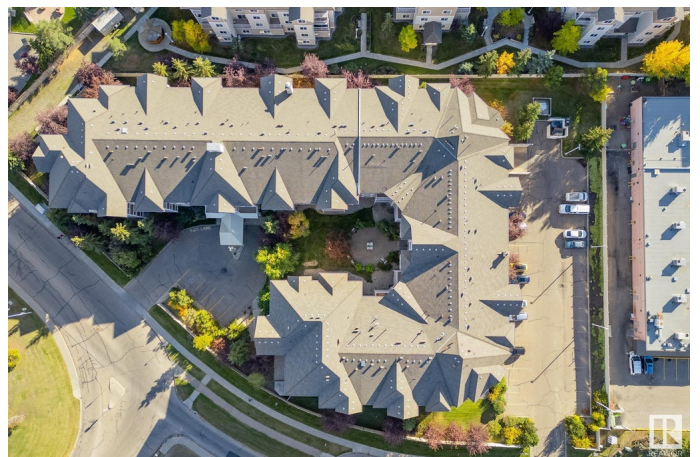
Built in 1998

Essential Information

MLS® #	E4420907
Price	\$189,900
Bedrooms	2
Bathrooms	2.00
Full Baths	2
Square Footage	1,049
Acres	0.00
Year Built	1998
Type	Condo / Townhouse
Sub-Type	Lowrise Apartment
Style	Single Level Apartment
Status	Active

Community Information

Address 109 10511 42 Avenue



Area	Edmonton
Subdivision	Rideau Park (Edmonton)
City	Edmonton
County	ALBERTA
Province	AB
Postal Code	T6J 7G8

Amenities

Amenities	Exercise Room, Intercom, Parking-Visitor, Party Room, Patio, Secured Parking, Security Door, Social Rooms, Storage Cage
Parking Spaces	2
Parking	Heated, Parkade, Underground

Interior

Interior Features	ensuite bathroom
Appliances	Dishwasher-Built-In, Dryer, Refrigerator, Stove-Electric, Washer
Heating	Baseboard, Hot Water, Natural Gas
Fireplace	Yes
Fireplaces	Glass Door
# of Stories	4
Stories	1
Has Basement	Yes
Basement	None, No Basement

Exterior

Exterior	Wood, Stucco
Exterior Features	Public Transportation, Schools, Shopping Nearby, See Remarks
Roof	Asphalt Shingles
Construction	Wood, Stucco
Foundation	Concrete Perimeter

Additional Information

Date Listed	February 7th, 2025
Days on Market	35
Zoning	Zone 16
Condo Fee	\$714

DATA IS DEEMED RELIABLE BUT IS NOT GUARANTEED ACCURATE BY THE REALTORS® ASSOCIATION OF EDMONTON. COPYRIGHT 2025 BY THE REALTORS® ASSOCIATION OF EDMONTON. ALL RIGHTS RESERVED. Trademarks are owned or controlled by the Canadian Real Estate Association (CREA) and identify real estate professionals who are members of CREA (REALTOR®, REALTORS®) and/or the quality of services they

provide (MLS® , Multiple Listing Service®)

Listing information last updated on March 14th, 2025 at 7:17am MDT