

\$589,555 - 18929 99a Avenue, Edmonton

MLS® #E4420429

\$589,555

9 Bedroom, 4.00 Bathroom, 4,146 sqft
Single Family on 0.00 Acres

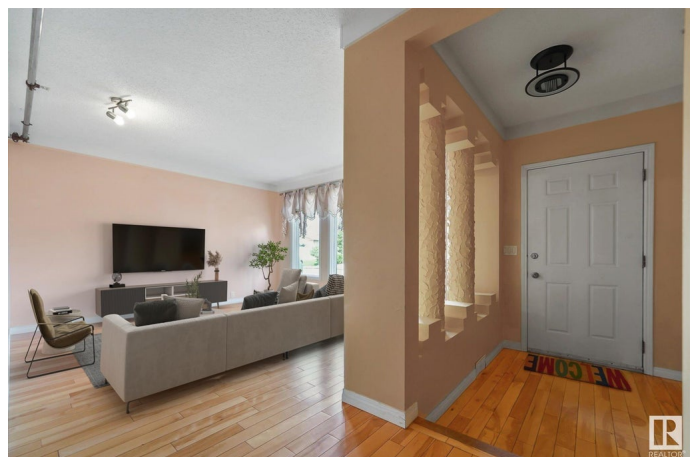
La Perle, Edmonton, AB

9 Bedroom Home with an ELEVATOR inside!!
Less than 5 mins to WEST EDMONTON MALL & 9 mins to Misericordia Hospital! This MASSIVE home offers almost 4,600 sqft of fully finished living space (including the fully finished basement). Located in a well-established neighborhood, and close proximity to schools, park, shopping and public transit, this home is perfect for a growing family or running a homecare business. Featuring 9 bedrooms, 4 large bathrooms designed for special needs (wheelchair accessible), 2 spacious living rooms, a sunroom, 2 utility rooms, a large attic, a den, & an elevator to access the second floor, this property is ideal for multigenerational living. Tons of money has been spent on the sprinkler system, and revamping the home to run a certified business. Fully fenced yard, and if you have a bigger truck or SUV, you have a double-oversized attached garage, plus a huge driveway for RV storage. Amazing location, great price, don't miss the opportunity to make this home yours!

Built in 1982

Essential Information

| | |
|--------|-----------|
| MLS® # | E4420429 |
| Price | \$589,555 |



| | |
|----------------|------------------------|
| Bedrooms | 9 |
| Bathrooms | 4.00 |
| Full Baths | 4 |
| Square Footage | 4,146 |
| Acres | 0.00 |
| Year Built | 1982 |
| Type | Single Family |
| Sub-Type | Detached Single Family |
| Style | 2 Storey |
| Status | Active |

Community Information

| | |
|-------------|------------------|
| Address | 18929 99a Avenue |
| Area | Edmonton |
| Subdivision | La Perle |
| City | Edmonton |
| County | ALBERTA |
| Province | AB |
| Postal Code | T5T 3M9 |

Amenities

| | |
|----------------|------------------------|
| Amenities | Sunroom |
| Parking Spaces | 4 |
| Parking | Double Garage Attached |

Interior

| | |
|--------------|---------------------------|
| Appliances | See Remarks |
| Heating | Forced Air-1, Natural Gas |
| Fireplace | Yes |
| Fireplaces | Mantel |
| Stories | 4 |
| Has Basement | Yes |
| Basement | Full, Finished |

Exterior

| | |
|-------------------|---|
| Exterior | Wood, Stucco |
| Exterior Features | Fenced, Flat Site, Landscaped, Playground Nearby, Public Transportation, Schools, Shopping Nearby |
| Roof | Asphalt Shingles |

Construction Wood, Stucco
Foundation Concrete Perimeter

Additional Information

Date Listed February 5th, 2025
Days on Market 65
Zoning Zone 20

DATA IS DEEMED RELIABLE BUT IS NOT GUARANTEED ACCURATE BY THE REALTORS® ASSOCIATION OF EDMONTON. COPYRIGHT 2025 BY THE REALTORS® ASSOCIATION OF EDMONTON. ALL RIGHTS RESERVED. Trademarks are owned or controlled by the Canadian Real Estate Association (CREA) and identify real estate professionals who are members of CREA (REALTOR®, REALTORS®) and/or the quality of services they provide (MLS®, Multiple Listing Service®)

Listing information last updated on April 11th, 2025 at 7:32am MDT