

\$1,575,000 - 9724 82 Avenue, Edmonton

MLS® #E4418759

\$1,575,000

0 Bedroom, 0.00 Bathroom,
Single Family on 0.00 Acres

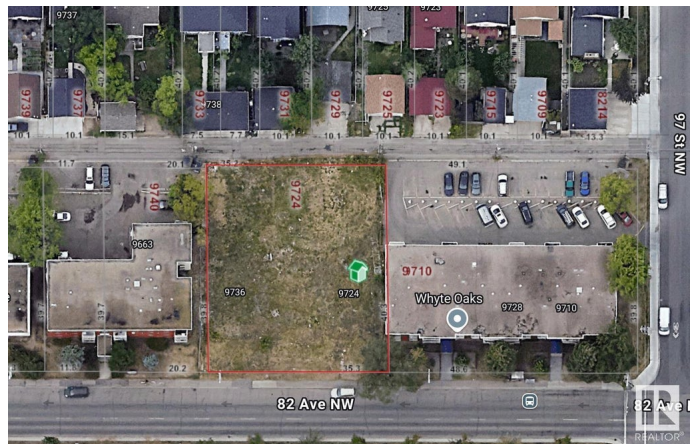
Strathcona, Edmonton, AB

This is a prime opportunity to invest in three side-by-side lots located in a high-demand area on Whyte Avenue. Currently zoned for RA8 development, the lots offer the potential for rezoning to Mixed-Use CB3, which allows for more versatile development options. This is an ideal location for creating, building, or reimagining a project that capitalizes on the area's growth and demand.



Essential Information

MLS® #	E4418759
Price	\$1,575,000
Bathrooms	0.00
Acres	0.00
Type	Single Family
Sub-Type	Vacant Lot/Land
Status	Active



Community Information

Address	9724 82 Avenue
Area	Edmonton
Subdivision	Strathcona
City	Edmonton
County	ALBERTA
Province	AB
Postal Code	T6E 1Y5

Exterior

Exterior Features Back Lane, Flat Site, Schools, Shopping Nearby, Subdividable Lot, See Remarks

Additional Information

Date Listed January 21st, 2025

Days on Market 77

Zoning Zone 15

DATA IS DEEMED RELIABLE BUT IS NOT GUARANTEED ACCURATE BY THE REALTORS® ASSOCIATION OF EDMONTON. COPYRIGHT 2025 BY THE REALTORS® ASSOCIATION OF EDMONTON. ALL RIGHTS RESERVED. Trademarks are owned or controlled by the Canadian Real Estate Association (CREA) and identify real estate professionals who are members of CREA (REALTOR®, REALTORS®) and/or the quality of services they provide (MLS®, Multiple Listing Service®)

Listing information last updated on April 8th, 2025 at 6:17am MDT