

Courtesy Of Sally Munro Of Century 21 Masters

\$2,498,000 - 116 Windermere Crescent, Edmonton

MLS® #E4411610

\$2,498,000

4 Bedroom, 5.00 Bathroom, 4,266 sqft
Single Family on 0.00 Acres

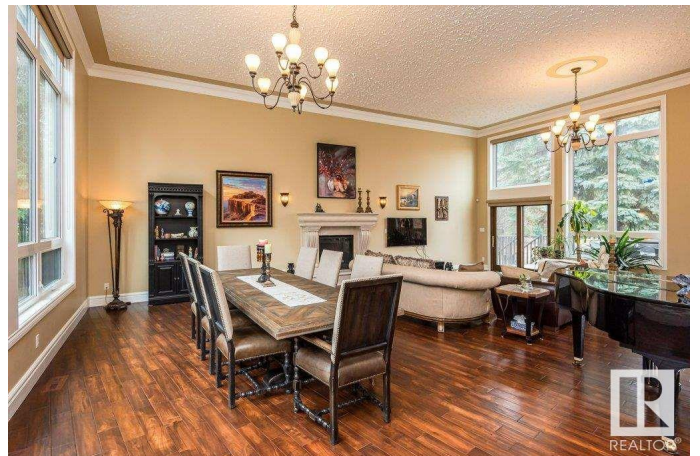
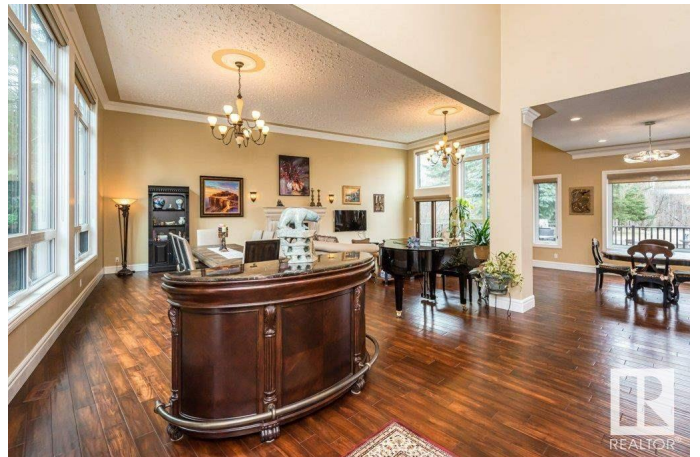
Windermere, Edmonton, AB

An estate to defy all estates in Windermere. Nestled on 1.247 acres surrounded by trees and the ravine. This extraordinary new executive 2 storey 4265 sq ft plus 2011sq ft finished basement has 4 generous bedrooms 5 baths, bonus room & laundry room. Very private, serene setting, it is a dream to live in a park like setting backing onto the ravine, Golf Course and River, a truly special location! Exceptional quality finishes. The main floor is a stunning great room design with high open ceilings and stunning walls of glazing it makes the views truly breathtaking. The Chef inspired gourmet kitchen with huge granite island overlooks the dining area and great room. Fully equipped with walk-in pantry. Main floor office, 3pce bath with dog wash. Numerous upgraded features main floor office, media rec room, bedroom, bath, upgraded mechanical system, 2 a/c. Beautifully landscaped circular driveway. An estate for every season. The ideal estate with room to grow. Ample room for pool, garden and room to play.

Built in 2016

Essential Information

| | |
|----------|-------------|
| MLS® # | E4411610 |
| Price | \$2,498,000 |
| Bedrooms | 4 |



| | |
|----------------|------------------------|
| Bathrooms | 5.00 |
| Full Baths | 5 |
| Square Footage | 4,266 |
| Acres | 0.00 |
| Year Built | 2016 |
| Type | Single Family |
| Sub-Type | Detached Single Family |
| Style | 2 Storey |
| Status | Active |

Community Information

| | |
|-------------|-------------------------|
| Address | 116 Windermere Crescent |
| Area | Edmonton |
| Subdivision | Windermere |
| City | Edmonton |
| County | ALBERTA |
| Province | AB |
| Postal Code | T6W 0S3 |

Amenities

| | |
|----------------|--|
| Amenities | Air Conditioner, Deck, Detectors Smoke, Parking-Extra |
| Parking Spaces | 10 |
| Parking | Front/Rear Drive Access, Insulated, Over Sized, Triple Garage Attached |

Interior

| | |
|-------------------|---|
| Interior Features | ensuite bathroom |
| Appliances | Air Conditioning-Central, Dishwasher-Built-In, Dryer, Garage Control, Garage Opener, Hood Fan, Refrigerator, Stove-Countertop Gas, Washer, Window Coverings |
| Heating | Forced Air-2, Natural Gas |
| Fireplace | Yes |
| Fireplaces | Mantel |
| Stories | 3 |
| Has Basement | Yes |
| Basement | Full, Finished |

Exterior

| | |
|-------------------|---|
| Exterior | Wood, Stone, Stucco |
| Exterior Features | Backs Onto Park/Trees, Fruit Trees/Shrubs, Golf Nearby, Landscaped, |

Private Setting, Ravine View, Shopping Nearby, Treed Lot

Roof See Remarks
Construction Wood, Stone, Stucco
Foundation Concrete Perimeter

Additional Information

Date Listed October 25th, 2024
Days on Market 163
Zoning Zone 56

DATA IS DEEMED RELIABLE BUT IS NOT GUARANTEED ACCURATE BY THE REALTORS® ASSOCIATION OF EDMONTON. COPYRIGHT 2025 BY THE REALTORS® ASSOCIATION OF EDMONTON. ALL RIGHTS RESERVED. Trademarks are owned or controlled by the Canadian Real Estate Association (CREA) and identify real estate professionals who are members of CREA (REALTOR®, REALTORS®) and/or the quality of services they provide (MLS®, Multiple Listing Service®)

Listing information last updated on April 6th, 2025 at 9:47am MDT